

November Newsletter

ASHRAE Atlanta Chapter

A decorative graphic consisting of several interlocking hexagons in shades of blue and green. In the center of the arrangement is a photograph of a modern skyscraper with a glass facade, viewed from a low angle looking up towards the sun, which is shining brightly in a blue sky with some clouds.

President's Message
Chapter Calendar
Red and Green Scene
YEA Event
Chapter Technology Transfer
Membership Promotion
Like us on Facebook!
Employment Opportunities
Recognition of RP Donors
Grassroots Government Activities
Student Activities
History
Save the Date – Past President's Luncheon
Product Directory
How to Join ASHRAE
Website Reference List
Meet your Chapter Officers!
Officer Directory
Industry Opportunities

Upcoming Important Dates

Scholarship Applications Due
Red and Green Scene
Chapter Meeting

December 1st, 2013
December 12th, 2013
January 14th, 2014

November 2013



Thank you so much for those of you who joined us for our dinner meeting on November 12! The venue was excellent and I was happy to see so many ASHRAE members networking. Thanks again to Hughes Supply and Rheem Commercial HVAC for sponsoring our cocktail hour- it was a resounding success.

Coming up in December our annual Red and Green Scene event, which is co-hosted by multiple industry organizations. You do not want to miss this event! More details in the newsletter.

VOLUNTEER OF THE MONTH: Nick Kassanis, Research Promotion Chair, and Kurt Ehlers, Research Promotion Co-Chair

Nick and Kurt hosted a very successful golf tournament in October, raising significant funds for Research Promotion.

For all of their hard work, I recognized Nick and Kurt as our **Atlanta Chapter Volunteers of the Month**. Please thank Nick and Kurt when you see them next.

Do you know of any students deserving of a scholarship? ASHRAE Scholarship applications are due Dec 1! This is FREE MONEY for college students – don't miss out!

Have you used our [Product Directory](#)? There is more information on what the product directory is in this month's newsletter.

Pamela Androff
Atlanta Chapter President 2013-2014
president@ashraeatlanta.org
www.ashraeatlanta.org

This Atlanta Chapter Newsletter goes by email only to all Atlanta Chapter ASHRAE members along with all other ASHRAE members in our area and anyone else who asks. If you need a change in our email list, please notify our Chapter Secretary at secretary@ashraeatlanta.org

ATLANTA CHAPTER CALENDAR

DATE	EVENT	LOCATION	SPEAKER/TOPIC
December			
12.1.2013	ASHRAE Scholarship Applications Due (For College Students)	-	-
12.5.2013	YEA Networking Event	Monday Night Brewing	-
12.12.2013	Red and Green Scene Holiday Party	Opera Nightclub	-
January			
1.14.2013	Chapter Meeting - LUNCH Emphasis: Membership	ASHRAE HQ	
February			
2.11.2014	Chapter Meeting - DINNER Emphasis: Student Activities, RP	ASHRAE HQ	Tom Lawrence ASHRAE 189.1
2.22.2014	Refrigeration Tour	Monday Night Brewing	-
TBD	Trap Shoot benefiting Research Promotion	TBD	-
March			
3.11.2014	Chapter Meeting - LUNCH Emphasis: GGAC	ASHRAE HQ	
3.14.2014	Old Codger's Luncheon (Past Presidents and Life Members)	Villa Christina	-
April			
4.11.2014	Chapter Meeting - LUNCH Emphasis: CTTC, YEA	TBD	
4.17.2014	ASHRAE Webcast	Virtual	Buildings in Balance: IEQ and Energy Efficiency
TBA	YEA Event – Spring Classic – Georgia Tech vs. UGA Baseball Game	Turner Field	-
May			
5.1.2013	ASHRAE Scholarship Applications Due (For High School Students)	-	-
TBD	Spring Golf Tournament	TBD	-
TBD	May Outing	The Ridges Resort, Hiawassee, GA	-
June			

This Atlanta Chapter Newsletter goes by email only to all Atlanta Chapter ASHRAE members along with all other ASHRAE members in our area and anyone else who asks. If you need a change in our email list, please notify our Chapter Secretary at secretary@ashraeatlanta.org

JOIN US!

Meet and mingle with top enthusiasts of sustainability and the built environment at one of Atlanta's largest holiday industry events, supporting Toys for Tots and our annual community service project. More than 800 industry friends will be there to meet you.

RED & GREEN SCENE!

DECEMBER 12, 2013

Six to Eleven PM | Opera Night Club, Atlanta, Georgia

BECOME A SPONSOR!

DIAMOND (SOLD OUT)

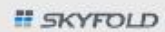
GOLD - 8 REMAINING

SILVER - 9 REMAINING

BRONZE - 23 REMAINING

Thank you to our generous sponsors!

SILVER



DIAMOND



Quality inspires

Hurry, Tickets & Sponsor availability are limited. Reserve today!

WWW.REDANDGREENSCENE.COM

YOUR HOST ORGANIZATIONS



SUPPORTING



This Atlanta Chapter Newsletter goes by email only to all Atlanta Chapter ASHRAE members along with all other ASHRAE members in our area and anyone else who asks. If you need a change in our email list, please notify our Chapter Secretary at secretary@ashraeatlanta.org



Atlanta ASHRAE, come join YEA for a brewery tour and tasting at Monday Night Brewing!

When: Thursday December 5, 2013 5:30 – 7:30PM

Where: Monday Night Brewing – 670 Trabert Ave NW, Atlanta, GA 30318

Cost: \$10 at the door (Includes a souvenir pint glass, four 8oz tastings, and the tour)

Registration is not mandatory, but appreciated. Please confirm your attendance at <http://www.ashraeatlanta.org/Events>.

If you have any questions, please contact Sarah Young at yea@ashraeatlanta.org.

Chapter Technology Transfer

LEED v4 Officially Launches

LEED v4, the newest version of the LEED green building program, launched Nov. 20 at the annual Greenbuild International Conference and Expo. LEED v4 features new market sector adaptations for LEED, including data centers, warehouses and distribution centers, hospitality, existing schools, existing retail and mid-rise residential projects. It also includes new impact categories: climate change, human health, water resources, biodiversity, green economy, community and natural resources. More than 120 beta projects around the world are already using LEED v4.



Highlights of LEED v4 include:

- New market sectors: New market sector adaptations for LEED include data centers, warehouses and distribution centers, hospitality, existing schools, existing retail and mid-rise residential projects.
- Time saving support tools and resources: Simplified LEED credit submittal requirements, descriptive step-by-step reference guide materials with videos and tutorials, and a more intuitive technology platform.
- Building performance management: LEED v4 is focused on outcomes so that building owners have a better understanding of how to manage their buildings to meet full performance potential.
- New impact categories: Climate change, human health, water resources, biodiversity, green economy, community and natural resources.

“LEED v4, at its core, provides insight into the synergies within the building system, providing solutions for optimizing performance, and ultimately achieving better environmental, economic and social outcomes in our buildings,” said Scot Horst, senior vice president of LEED, USGBC. “LEED v4 is the LEED of the future, where we challenge the marketplace to go further, to make the next great leap toward better, cleaner, healthier buildings where people live and work.”

The first LEED v4 project certifications were recognized at Greenbuild this week: the Haworth Beijing Organic Showroom achieved LEED v4 Gold. Located in Beijing, China, this project certified its commercial interior space. The project is owned by Haworth, and the LEED process was administered by Bisagni Environmental Enterprise (BEE) Inc.

1800 K St. in Washington, D.C., was awarded LEED v4 Silver. This project was certified as an existing building and is owned by Deutsche Asset & Wealth Management and administered by Transwestern. Additionally, three core and shell projects earned LEED precertification: University Place in Philadelphia, 10 Emery St. in Bethlehem, Pa., and Capitol Tower Complex in Houston.

This Atlanta Chapter Newsletter goes by email only to all Atlanta Chapter ASHRAE members along with all other ASHRAE members in our area and anyone else who asks. If you need a change in our email list, please notify our Chapter Secretary at secretary@ashraeatlanta.org

Membership Promotion

Our November meeting was a success. Kudos to William Coad for reminding us that the "Green Movement" starts with us in terms of Energy Ethics. Great speech with a down to earth insight of what we can do to get better. Let's keep the Chapter success momentum by promoting our skills, having peers, staff, & colleagues to enroll into our Society, and by making helping others. It's easy!. Take a minute to socialize and network with new members during our meetings and other activities.

Don't forget to stay on top of the industry trends by continuing the access to our ASHRAE benefits since they were developed by us for us. Start taking advantage of these valuable benefits that will help you to make the most out of your career goals whatever they would be within the HVAC and IAQ fields. Also take a minute and send feedback of which topics of interest we should have on the Chapter Meetings to make your work easier.

Member Updates

This month's Chapter meeting will feature our first Membership Promotion Event, details for follow on formal announcement. I encourage all members to bring a guest to this meeting. In the meantime let's give a warm welcome to the following new members:

Mr. Thomas Baker	Mr. Wesley Bryan	Mr. Russell Knudson	Mr. Dock Strong
Mr. Robert Causseaux	Mr. Kevin B. Dye	Mr. Stephen Bosch	Mr. Adam Anderson

Advancement

I already sent e-mails to a total of 71 Associates that do qualify for membership advancement. So, far we got four (4) new upgrades for the month of November and more are still in process. Remember, the member status always looks good on business cards and helps promote your work. In the end it will make you look good and committed to your work.

For now let's congratulate the following new Member grades:

Mr. Steen Hagensen	Mr. John L Kraus	Mr. Jeffery D Smith	Mr. David K Spruill
--------------------	------------------	---------------------	---------------------

Thank you again for being part of our prestigious Society and especially of our Atlanta chapter, let's work together to make our chapter the leader of the region again.



Pedro Pacheco
MP Chair Atlanta Chapter



Ted Duffy
MP Co-Chair Atlanta Chapter

e-mail either of us at: membership@ashraeatlanta.org

Kurt Ehlers, our Public Relations Chair, invites you to:



www.facebook.com/ASHRAEAtlanta

Follow us on



<http://www.linkedin.com/groups/ASHRAE-Atlanta-Chapter-2186496>

Employment Opportunities

Did you know that employers post job opportunities on the Atlanta Chapter website for free?

<http://ashraeatlanta.org/JobOpportunities>

You can even subscribe to the listings to receive an e-mail any time a new listing is posted!

NEW! Here is a list of some of the current opportunities posted:

- Senior Manager, Building Code Compliance
- Commissioning Engineer
- Filtration Solutions Manager Professional
- Construction Field Representative
- HVAC Technical Service Advisor
- Energy Modeling Professional

2013-2014 Research Promotion Campaign's Contributors

Company Research Associates (\$2500 and greater)

Company / Individual Major Donor Silver and Bronze (\$500 - \$2499)

Mr. Steven F Bruning
Lincoln Associates

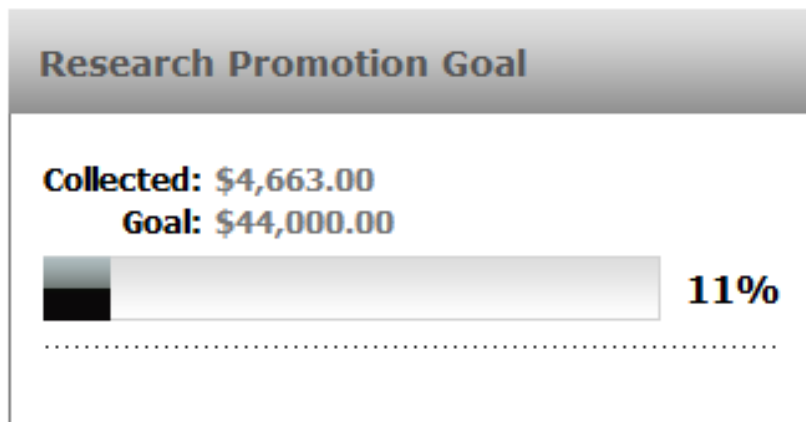
Company / Individual Major Donor (\$250 - \$499)

Dr Sheldon M Jeter, PhD

Company / Individual Honor Roll Donor (\$100 - \$249)

Mr Jason K Clifton
Mr Edwin E Hill
Mr Mark A Dahir
Mr Thomas S Kisgen, PE
Mr Michael R Vaughn
Mr Ignatius Nicholas Kassanis
Miss Pamela L Androff, PE
Mr. Patrick J McCabe
Mr. William Howestein

Mr. Kurt M Ehlers
Mr. John D Pruitt
Mr. Charles A Miltiades
Ms. Pamela M Immekus
Mr Richard Lee Dustin
HESM & A Inc
Mr Brian K Justice
Ms Peggy J Fritz
Ms Caroline C Calloway



Please visit ashrae.org/donate to contribute and be sure to specify ATLANTA Chapter!

GRASSROOTS GOVERNMENT ACTIVITIES COMMITTEE

In November 2013 the American Council for an Energy Efficient Economy (ACEEE) released the seventh annual edition of the *State Energy Efficiency Scorecard*. The State Scorecard examines the six policy areas in which states typically pursue energy efficiency: utility and “public benefits”; programs and policies; transportation policies; building energy codes and compliance; combined heat and power policies; appliance and equipment standards; and state government-led initiatives around energy efficiency. Unfortunately, Georgia’s 2013 Scorecard remained unchanged from its 33rd place ranking in 2012. Massachusetts took 1st place for the third year in a row, while Mississippi topped the list of the “5 Most Improved States.”



A summary of Georgia’s 2013 State Energy Efficiency Scorecard is as follows:

- **Utilities:** Though utilities in the state do include efficiency within their integrated resource plans, they devote relatively low amounts of funding to these programs compared to other states. As a result, Georgia reported below-average levels of electricity savings.
- **Transportation:** The state has complete streets legislation in place, and integrates transportation and land-use planning. Georgia also provides incentives for high-efficiency vehicles.
- **Building Energy Codes:** Georgia law requires that residential homes comply with the 2009 IECC. Commercial buildings must meet ASHRAE 90.1-2007 standards. Georgia has pursued limited compliance activities, including a gap analysis and training and outreach.
- **Combined Heat & Power:** The state offers incentives and grants for CHP projects, but otherwise has limited policies to encourage CHP. Two new CHP installations were completed in 2012.
- **State Government-Led Initiatives:** The Georgia government leads by example, requiring energy-efficient fleets and buildings and encouraging the use of energy savings performance contracts. The state offers a tax credit for energy-efficient investments. Research and development focused on energy efficiency is conducted at two institutions.
- **Appliance Standards:** Georgia utilities recognize energy efficiency as a resource, but without incentives to encourage efficiency as part of the utility business model, implementation of efficiency programs is minimal. Enacting policies that clearly define energy efficiency as a priority resource would encourage utilities to ramp up energy efficiency programs, as would setting mandatory energy savings requirements.

For more information on the State Scorecard or ACEEE visit <http://www.aceee.org/>

Regards,



Regards,

Jay Perkins, JD
ASHRAE Atlanta GGAC Chair
jdperkins@hvac.mea.com

Student Activities

Students - Here's your chance for some FREE MONEY!



The deadline for ASHRAE scholarships is December 1, 2013. Visit the website for more information:
<https://ashrae.org/membership--conferences/student-zone/scholarships-and-grants/scholarship-program>

We are happy to help students with the application process, including letters of recommendation. Please let us know if you plan on applying!



Matt Hunt

Atlanta ASHRAE Student Activities Chair

History Corner

Georgia Aquarium

The Georgia Aquarium is another important landmark in the Atlanta area. Located in downtown Atlanta, it opened in November 2005 as the largest aquarium in the world, whether you're measured it by the number of fish (more than 100,000) or the volume of water (more than a million cubic feet). The aquarium houses about 500 species in 60 habitats with 12,000 square feet of viewing windows, and it cost \$290 million to build. Boasting a unique design, the Georgia Aquarium has five separate galleries arranged around a central atrium. They are Georgia Explorer, Tropical Diver, Ocean Voyager, Cold-Water Quest and River Scout. Tanks within the galleries house a diverse population of animals, including whales, sharks, penguins, otters, electric eels, rays, seahorses, sea stars, crabs and a variety of fish of all sizes.



Aquarium HVAC Systems and Applications

The design of the HVAC for a facility like this, with its mixed-use characteristics, had to consider and integrate many similar but different requirements to effectively condition all areas. Two salient features of the facility are a central utility plant for heating and cooling and multiple rooftop units dedicated to the different areas of the facility.

The chiller plant is designed to operate efficiently at part-load conditions. Redundancy is provided to allow for equipment maintenance. Chillers with multiple compressors are included because they provide partial cooling during failures and enhance part-load operation.

The heating plant is designed to heat the building during the winter and to provide domestic hot water, pool heating, as well as service to kitchens and laundries.



The systems are arranged to circulate more than 445,000 CFM of conditioned air, including 267,000 CFM of outdoor air. The systems are designed to allow full airside economizers as decided by comparative air enthalpy.

The cooling plant is notable for the four 900 ton (3165 kW) electric centrifugal refrigeration machines. It provides cooling for the HVAC systems in the building and for the aquarium life support system (LSS) through

History Corner

heat exchangers. Controls are arranged to prioritize demands on the cooling plant to ensure maintaining the required temperatures in the tanks.

Separate systems are provided for each of the five galleries; aquarium offices, including the main entrance and ticketing; retail areas, theater and main plaza; administration; lab and holding areas; function rooms and rotunda. Additional units are dedicated to the back of the house that contains the aquarium's life support systems.

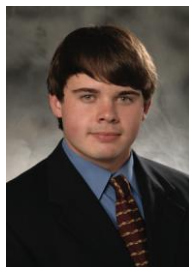
Note: Excerpts from Article by Patrick E. Halm P.E. published in the ASHRAE Journal of June 2007

Past Presidents and Lifetime Members Lunch.

We will be having our annual Past Presidents and Life Members Luncheon on March 14 at 11:30 am at Villa Christina Restaurant in Atlanta. Please save the date and plan to attend.



Edward Hunda
Atlanta Chapter History Chair



Scott McClure
Atlanta Chapter History Co - Chair

SAVE THE DATE

The ATLANTA Chapter of ASHRAE invites you to join us...

What: " The Past Presidents and Lifetime Members Luncheon "

Who: All ASHRAE Past Presidents, ASHRAE Life Members and 50 plus year members

When: Friday, March 14th 2014 starting at 11:30am

**Where: Villa Christina (located at 285 and Ashford Dunwoody Rd – map enclosed)
4000 Summit Boulevard
Atlanta, Ga. 30319**

Tel. 404-303-0133

The meal will be provided at no charge, compliments of the Atlanta Chapter of ASHRAE.

Please join us for a great meal, time to mingle with friends and share our ASHRAE experiences.

We look forward to seeing you there!

Please email edhunda@workingbuildings.com or call 678-990-4319 to register.

Best regards,

Edward Hunda -Atlanta ASHRAE History Chair 678-990-4319
Scott McClure -Atlanta ASHRAE History Co-Chair 678-990-4319

PS- If you are in need of a ride, please let us know and we will make arrangements.

Atlanta ASHRAE – Luncheon March 14th, 2014 11:30am

PLEASE RETURN TO:

Edward Hunda

fax: 678-990-5399

E-mail: edhunda@workingbuildings.com

Or

Scott McClure

wsmcclure@workingbuildings.com

PLEASE RSVP below:

PLEASE PRINT OR TYPE

Name _____

Company _____

Address _____

City _____ State _____ Zip _____

Telephone _____ Fax _____

Do you need a ride? _____

Do you have any special dietary requirements? _____

Product Directory

As a service to our Atlanta Chapter members, every other year we compile a Product Directory. The Product Directory is a tool to assist designers in identifying the companies and individuals who represent specific products or manufacturers.

Our Product Directory is **virtual**- available to you via our Atlanta Chapter Website. You can access it by visiting:

<http://ashraeatlanta.org/DirectoryofProducts>



Pamela Androff

[View profile](#)

[Change password](#)

[Logout](#)

[Home](#)
[Product Directory](#)
[Volunteer Interest](#)
[About Us](#)
[News Blog](#)
[Events](#)
[Golf Tournament](#)

Product Directory

Search for your local manufacturer's representative here. Click the "**Advanced Search**" option to find a specific type of product.

The directory will now be posted in an online format that will be searchable by over 1800 members and non-members that participate in the Atlanta Chapter.

[Advanced search...](#)

Search:

Found: **14**

Enter a search term here!



How to Join ASHRAE?

Go to <http://www.ashraeatlanta.org/> to start the process, click “Membership” on the horizontal menu bar. On the pull down menu, click “Join”. Enter your email address in the box “Verify your E-mail status”. A prospective member will then be directed to enter his or her email information. As a new member, your address will not be recognized, and you will be invited to “Register Now”. After you complete registration, you will be directed to the Individual Information page where you can finally select “Join ASHRAE”!

Web Sites Reference List

Again this year, our use of the Internet to further embrace our goal of Modeling a Sustainable World will be continued. Please use the web sites listed below:

1. RSVP and prepay for each event through the Atlanta ASHRAE <http://www.ashraeatlanta.org/>. For events where meals are served, you must at least RSVP to ensure that there will be a meal for you. We encourage you to prepay, as this will speed your way through the check-in process.
2. Pay your Chapter dues of \$40 per year directly to the chapter: <http://www.ashraeatlanta.org/Membership>. These dues are in addition to your Society dues and help fund the Chapter’s programs and outreach.
3. Donate to ASHRAE Research Promotion. We have a fundraising goal of \$44,000 this year, so please do what you can to help fund ASHRAE research. Donate here: <http://www.ashraeatlanta.org/Default.aspx?pagelId=748082>
4. Join the “ASHRAE Atlanta Chapter” group on LinkedIn at <http://www.linkedin.com/>.
5. Access the Product Directory online at the Atlanta ASHRAE website. Please note that this feature is in the process of being updated.

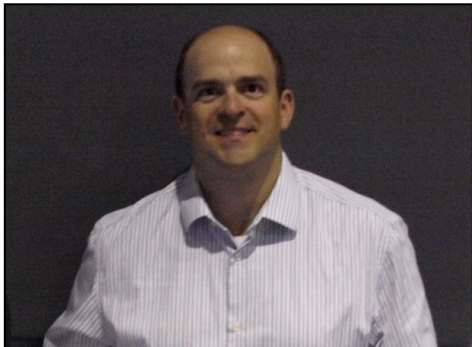
CHAPTER OFFICERS 2013-2014



Brian Justice – President Elect

presidentelect@ashraeatlanta.org

Brian has been a member of ASHRAE for 8 years. He has served the Atlanta Chapter as Secretary, Treasurer, Research Promotion Chair for 2 years and Research Promotion Co-Chair 1 year. Brian brings 22 years experience in refrigeration & HVAC as a design engineer, applications engineer, consultant, and regional manager. He has worked for companies such as Hussmann, Carrier, Lennox, AAON, and now Joe Powell and Associates. Brian earned his Bachelor of Science degree in Physics from Presbyterian College, a Bachelor of Science degree in Mechanical Engineering from Clemson University, and a Master's in Business Administration from Brenau University.



John Pruitt – Treasurer

treasurer@ashraeatlanta.org

John has been a member of ASHRAE for 6 years. He has served the Atlanta Chapter as Research Promotion Chair for 2 years and Secretary for 1 year. John Graduated from Georgia Tech in 1998 with a Mechanical Engineering degree. Since graduating, he has worked with Johnson Controls in Atlanta as a project manager and account executive. John Lives in Marietta and is married with 3 daughters.



Rick Dustin – Secretary

secretary@ashraeatlanta.org

Rick is a graduate of Georgia Institute of Technology with a Bachelor of Mechanical Engineering. He is currently the Director of Engineering at McKenney's, Inc. with responsibility for the HVAC & Plumbing design team as well as the Building Information Modeling (BIM) team. He was a cooperative education student with McKenney's in college and has been employed full time for 21 years. Rick has been a member of ASHRAE for 20 years and has served on the Board of Governors for the local chapter.

OFFICER DIRECTORY – 2013-2014

Office:	BOG	Name:	Email:
President / CRC Alternate	X	Pamela Androff	president@ashraeatlanta.org
Vice President / President Elect	X	Brian Justice	Justicebrian@charter.net
Treasurer	X	John Pruitt	john.d.pruitt@jci.com
Secretary / PAOE	X	Rick Dustin	rick.dustin@mckenneys.com
Past President 2012-13/CRC Delegate	X	Charles Miltiades***	charlesmiltiades@gmail.com
BOG	X	Charlie Fischer***	charles.h.fischer@jci.com
CTTC and Programs Chair	X	Tony Martin	aemartin@workingbuildings.com
MP Co-Chair		Henry Slack	slack.henry@epa.gov
Membership Promotion		Pedro Pacheco	pedro.pacheco@obg.com
MP Co-Chair		Ted Duffy	ted.duffy@gmail.com
Honors & Awards		Samir Sheth	ssheth@itsmarta.com
Honors & Awards Co-Chair		VACANT	
Student Activities		Matt Hunt	mhunt611@gmail.com
Student Activities Co-Chair		Jimmy Smith	smithjj@pondco.com
Historian		Ed Hunda	edhunda@workingbuildings.com
Co-Chair		Scott McClure	
Research Promotion		Nick Kassanis	inkassanis@workingbuildings.com
RP Co-Chair (Product Database)		Kurt Ehlers	
Refrigeration	X	Mark Dahir	markd@jmpco.com
Refrigeration Co-Chair		Gerard Roth	gproth@workingbuildings.com
YEA Chair		Sarah Young	syoung@dlbassociates.com
YEA Co-Chair		Allison Briede	aabriede@workingbuildings.com
Government Grassroots Activities Committee		Jay Perkins	jdperkins@hvac.me.com
Macon Section		Caroline Calloway***	caroline@callowayes.com
Attendance/Reception		Danny Cobucci	dannycobucci1@bellsouth.net
Attendance and Reception V. Chair		Darrell Sandlin	dsandlin@nexant.com
Spring Outing	X	Glenn Northrup***	gnorthrup@georgiaairassociates.com
GEF		John Boneberg	john.boneberg@obg.com
E-week		Brendan Gardes	bgardes@dlbassociates.com
Ways and Means/Audit Committee	X	Pat McCabe***	pjmccabe@charter.net
Holiday Party Activist		John McFarland***	jkmcfarland@workingbuildings.com
Holiday Party Activist		Michael Dudley***	
Region IV RVC History		Pam Immekus***	pam@leppardjohnson.com
Region IV RVC Student Activities		Peggy Fritz***	pjf41@att.net
Region IV RVC CTTC		Harris Sheinman***	HSheinma@heery.com
Region IV Nominating Committee Member		Caroline Calloway***	cccalloway@bellsouth.net
2015 Annual Chair		Pam Immekus	pam@leppardjohnson.com

*** Indicates a former Atlanta Chapter President.

Industry Opportunities

ASHRAE Winter Conference and AHR Expo



2014 Winter Conference and AHR Expo in New York!

Conference Jan. 18–22 | AHR Expo Jan. 21–23

www.ashrae.org/newyork

Special first timer registration fee available!



Technical Program—features a building-oriented theme, featuring tracks on building information systems; environmental health; international design; and, featured for this Conference, tall building performance.

AHR Expo—The ASHRAE co-sponsored AHR Expo takes place Jan. 21–23 (NOTE DAY CHANGE: Tuesday, Wednesday, Thursday) at Javits Convention Center. www.ahrexpo.com

ASHRAE Certification—all six certification programs are being offered: Building Energy Assessment Professional; Building Energy Modeling Professional; Commissioning Process Management Professional; High-Performance Building Design Professional; Healthcare Facility Design Professional; and Operations & Performance Management Professional.

ASHRAE Learning Institute—23 Professional Development Seminars and Short Courses are offered, including 11 new courses that include Standards 55 and 90.1, electric rates and regulations, health care facilities, building energy audits and ground source heat pumps.

